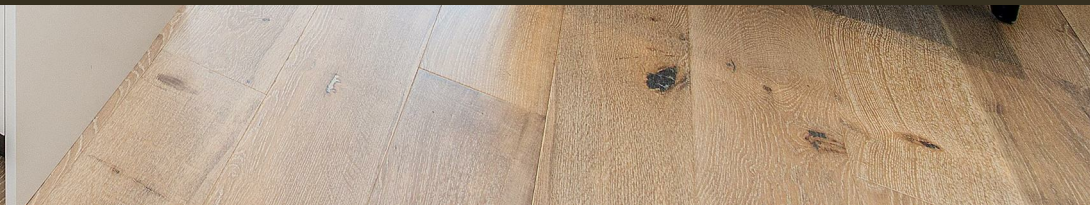




2 Riverlight Quay, London
SW11

GARTON JONES.COM



2 Riverlight Quay, London , SW11

£600 Per Week

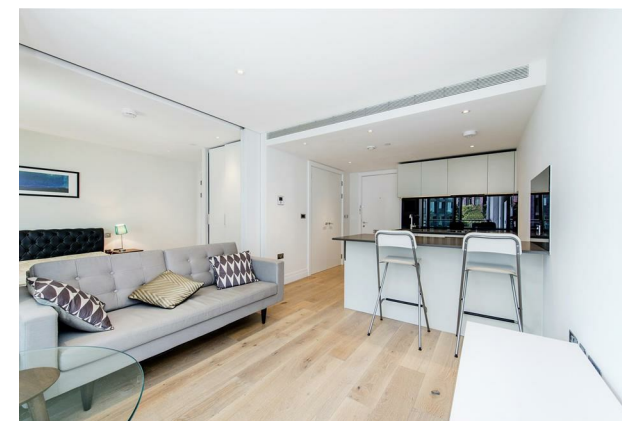
GARTON JONES.COM

9 Albert
Embankment
London
SE1 7SP

Lettings:
+44 (0) 20 7735 1888
nineelms@gartonjones.com
www.gartonjones.com

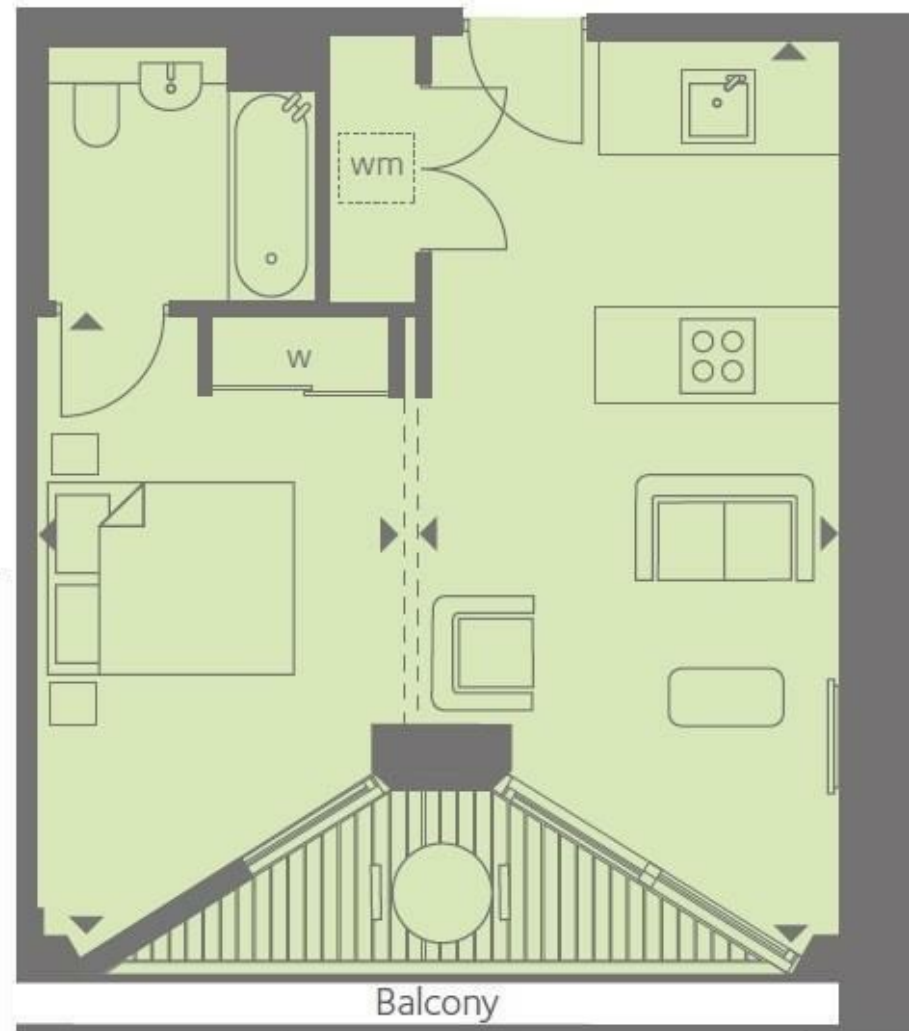
A spacious Manhattan Suite apartment of approx. 439sq.ft (40.80sq.m.) at 2 Riverlight Quay, a fantastic St James development on the banks of the River Thames. The property has a double bedroom with sliding door to an open plan reception room with a smart integrated kitchen, floor to ceiling windows, a luxury bathroom suite and full width balcony. Riverlight is located on the banks of the River Thames close to Battersea Power Station and residents have the use of some great onsite facilities including a residents health spa with a well-equipped "river view" gymnasium a heated swimming pool, virtual golf, a cinema and digital games room, resident's lounge, business suite and a 24-hour concierge service. On-site there are restaurants, a coffee shop and opposite at Embassy Gardens is a large Waitrose. Nine Elms Tube Station is less than a 5-minute walk away providing easy access into Central London.

- Manhattan Suite Apartment
- 439sq.ft (40.80sq.m)
- Bathroom
- Open Plan Reception
- Balcony
- Secure Parking (Under Separate Agreement)
- East Facing
- Residents Gym
- Swimming Pool & Spa Facilities
- 0.2 Miles to Battersea Power Station Tube



Please note furniture may differ to that shown in the current photos.

- Electricity Supply — Mains | Water Supply — Mains | Sewerage — Mains | Heating — Comfort Cooling
- Broadband & Mobile Signal : Check Coverage via Ofcom
- Parking: Available via Separate Agreement
- Lift Access
- Building Safety: EWS1 Available on Request
- Council Tax Band D (London Borough of Wandsworth)
- 5 Week Security Deposit
- Holding deposit equivalent to 1 week of rent
- Rent to be payable monthly in advance
- EPC Rating C (80)



INTERNAL AREA M² / SQ FT 40.80 / 439

